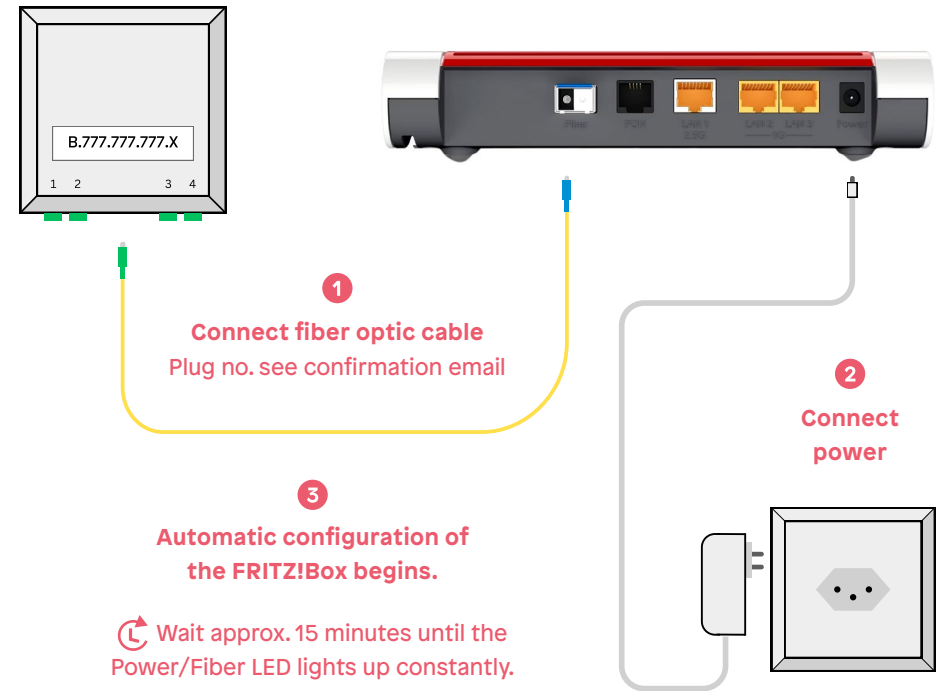


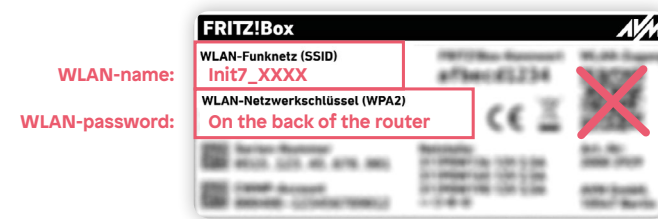
4
Mit WLAN verbinden



i Nach der Konfiguration ändert sich der WLAN-Name und der QR-Code kann nicht mehr verwendet werden.

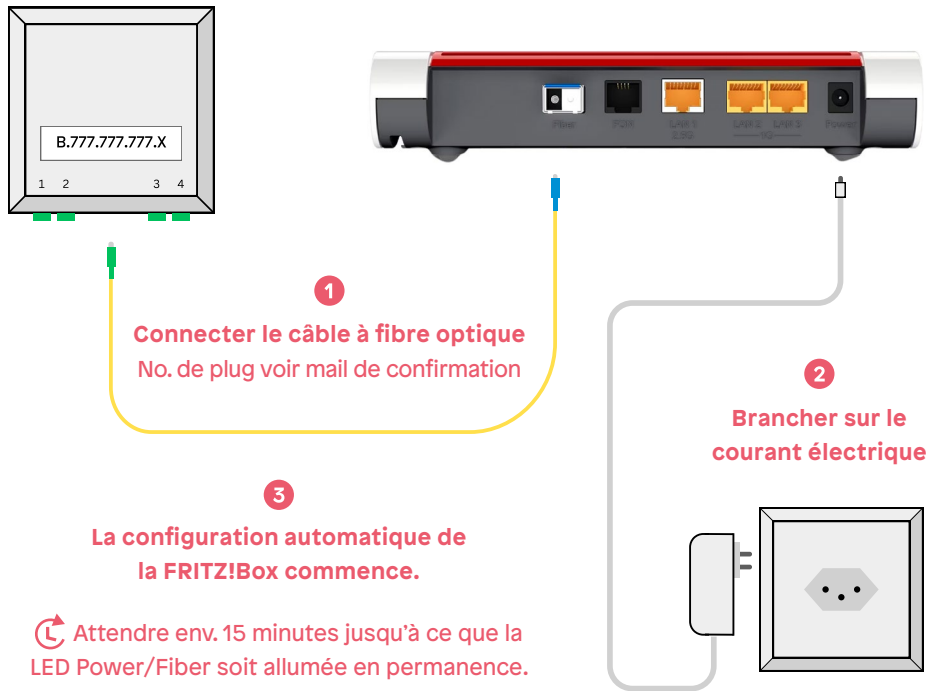


4
Connect to WLAN



i After configuration the Wi-Fi name changes and the QR code can no longer be used.



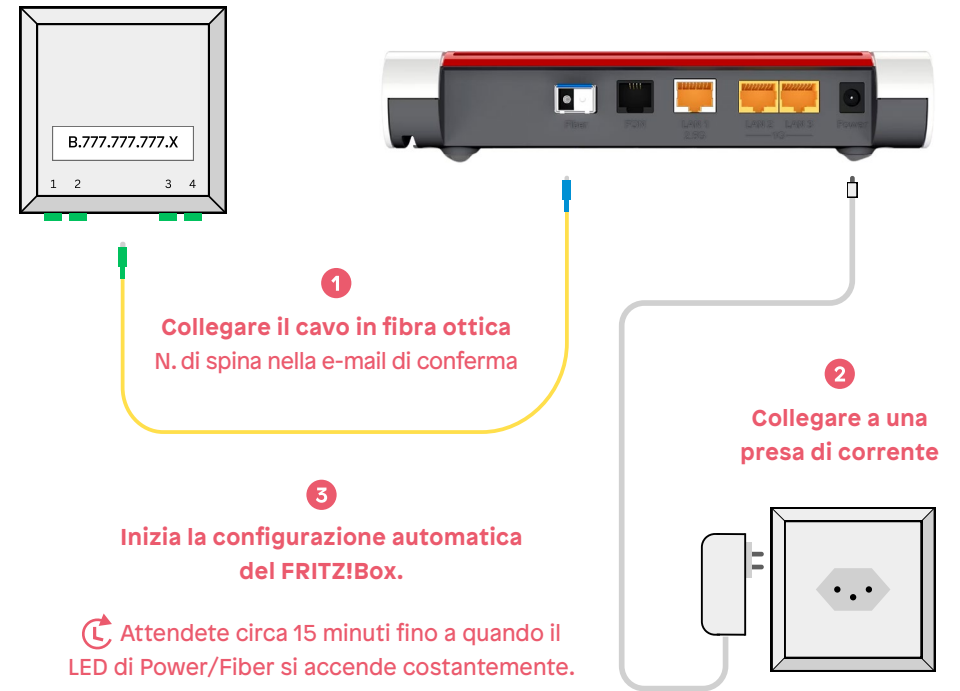


4
Se connecter au réseau WLAN

Nom du WLAN: **Init7_XXXX**

Mot de passe WLAN: **Au dos du routeur**

i Après la configuration le nom du WLAN change et le code QR ne peut plus être utilisé.



4
Collegarsi alla WLAN

Nome WLAN: **Init7_XXXX**

Password WLAN: **Sul retro del router**

i Dopo la configurazione il nome della Wi-Fi cambia e il codice QR non può più essere utilizzato.

